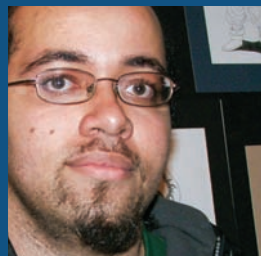
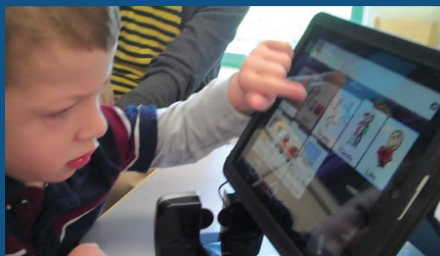





**HDI** Human Development  
i n s t i t u t e  
UNIVERSITY CENTER FOR EXCELLENCE IN DEVELOPMENTAL DISABILITIES



**HDI. Promoting  
independence,  
productivity,  
and integration  
for all people.  
This is what we do.**



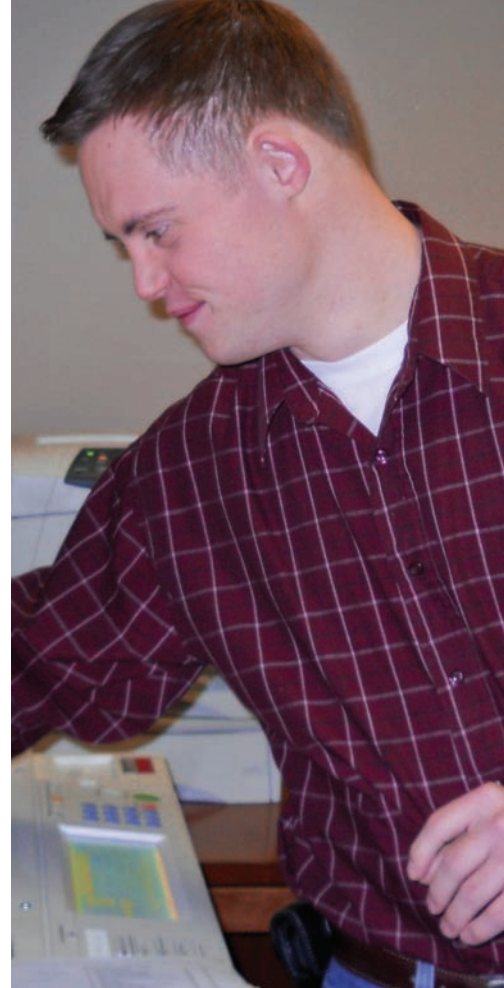
We focus our efforts on improving lifelong opportunities and services for individuals with disabilities, their families, and the community.



The Human Development Institute is Kentucky's University Center for Excellence in Developmental Disabilities and a member institution of the Association of University Centers on Disabilities (AUCD).



As part of the University of Kentucky, HDI provides a strong foundation for more than 40 disability-related research, training and service projects which address a wide range of topics and issues in areas like early childhood, education and alternate assessment, transition across the lifespan, employment, community living, and personnel preparation.



# Human Develo



Established in 1969, HDI has grown to house over 200 employees. Our work impacts every corner of the state of Kentucky, as well as programs within approximately 25 other states.



Development Institute

[www.hdi.uky.edu](http://www.hdi.uky.edu)



Human Development Institute

University Center for Excellence in Developmental Disabilities